

# FOR LEASE: WAVERLY SILO BUILDING

📍 Howard County, Maryland

**LOCATION** » 2470 Longstone Lane | Marriottsville, Maryland 21104



## AVAILABLE

Suite 170: 2,800 sf  
Suite 250: 1,240 sf  
(available 6/1/2021)

**TERM:** 5-10 years

## PARKING RATIO

5:1,000 sf

## RENTAL RATE:

Suite 170: \$23.00/sf, NNN  
Suite 250: \$23.00/sf, MG

## HIGHLIGHTS:

- + Office/retail space with signage facing Marriottsville Road
- + Numerous restaurants and services within walking distance
- + Great access to Rte 70, Rte 40, Rte 29 and Turf Valley
- + Complimentary tenant access to Waverly Woods Golf Club's pool, tennis courts, and club house.



**Dave Sciamarelli** » 973-713-1846 Dave@Key-CRE.com

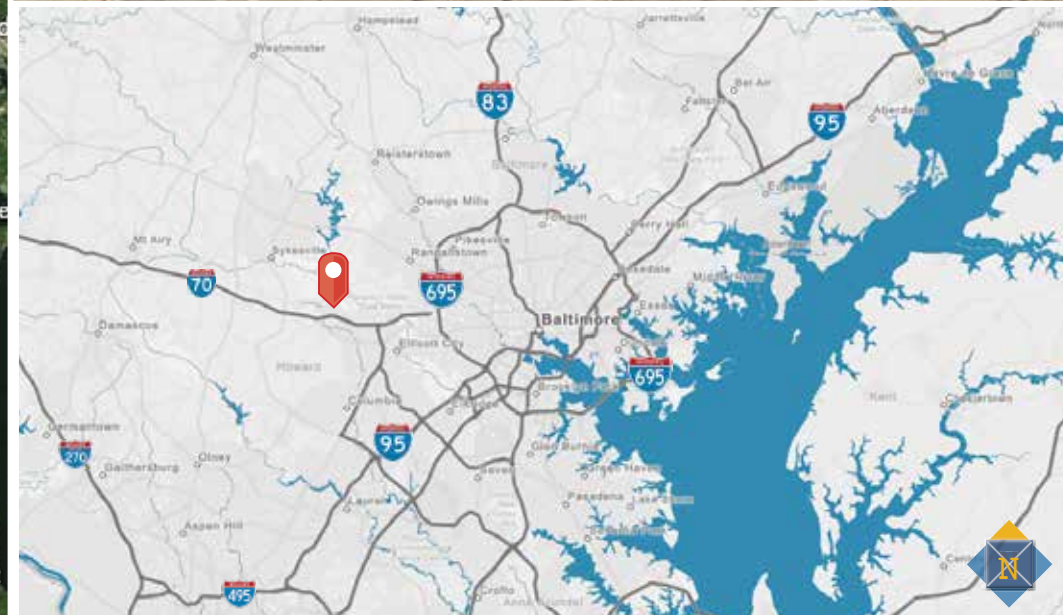
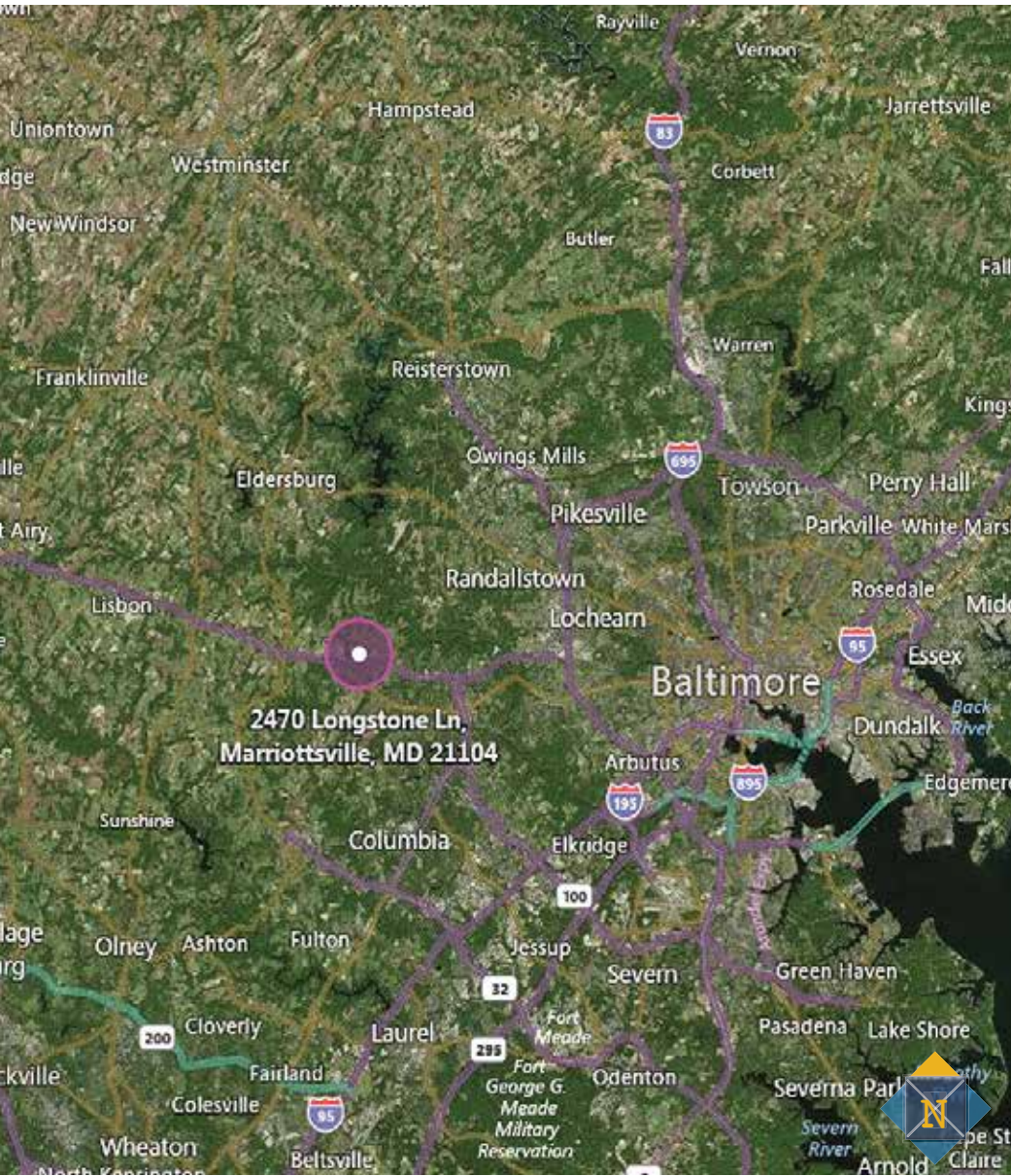
KEY COMMERCIAL REAL ESTATE

Key-CRE.com

# FOR LEASE: WAVERLY SILO BUILDING

📍 Howard County, Maryland

MAP VIEW » 2470 Longstone Lane | Marriottsville, Maryland 21104



Dave Sciamarelli » 973-713-1846 Dave@Key-CRE.com

KEY COMMERCIAL REAL ESTATE

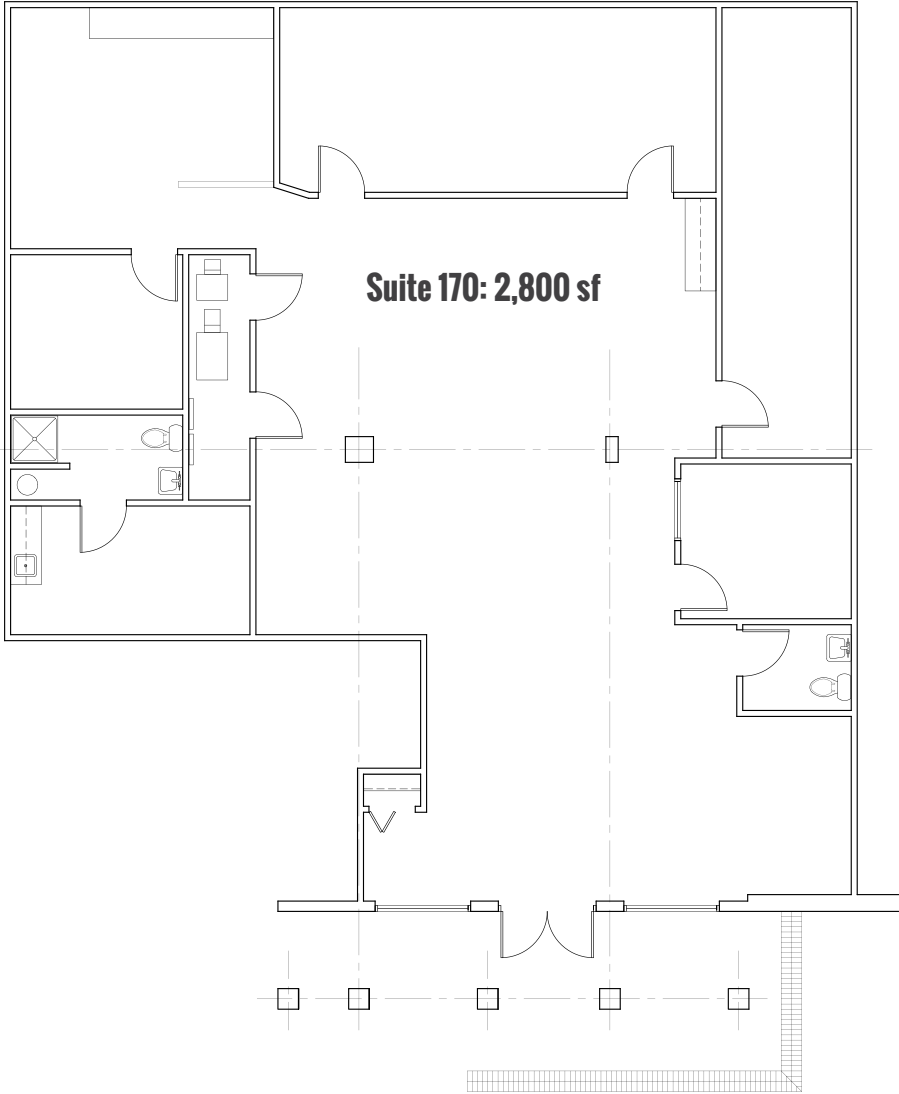
Key-CRE.com

# FOR LEASE:

Howard County, Maryland

# WAVERLY SILO BUILDING

FLOOR PLANS » 2470 Longstone Lane | Marriottsville, Maryland 21104



Dave Sciamarelli » 973-713-1846 Dave@Key-CRE.com

KEY COMMERCIAL REAL ESTATE

Key-CRE.com